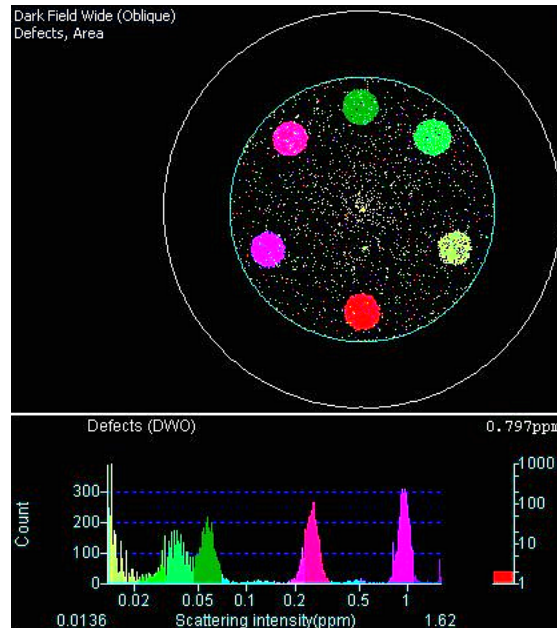


# Leopard Contamination Standards

**SPOT PROBLEMS QUICKLY.** The Leopard Contamination Standard (LCS) is used to calibrate instruments which size and detect particles over a range of values, on the surface of bare silicon wafers. Use it to characterize particles common to your process.

Pictured on the right is the map of a wafer which was deposited with PSL spheres of various sizes.



## PRODUCT SPECIFICATIONS

- **SEMI Specification Silicon Wafers**  
200 mm and 300 mm diameter silicon wafers
- **Spots**  
4, 5 or 6
- **Polystyrene Latex Spheres**  
From 50 nm up to 3 micron\*
- **Traceability**  
PSL diameter traceable to NIST

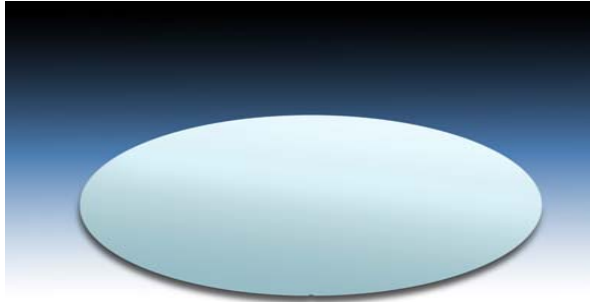
\* Sizes in other ranges may be available. Please check with VLSI Standards.

## PRODUCT DESCRIPTION

Utilizing spot depositions, VLSI Standards places distinct groups of polystyrene latex (PSL) spheres onto the surface of bare silicon wafers. Standards are made containing a choice of 4, 5 or 6 homogenous spots, and are offered in incremental range from 0.050  $\mu\text{m}$  to 3  $\mu\text{m}$ .

Each spot is approximately 20 mm in diameter and contains approximately 5,000 spheres.

The Leopard Contamination Standard is designed to calibrate particle size, and not particle count. Background contamination is kept at an extremely low level and is described on the measurement certificate.



**LCS**

**Leopard Contamination Standard**

Application: Range Defect Size Calibration  
 Equipment: Defect Inspection  
 Material: Polystyrene Latex Sphere (PSL) on Silicon  
 Traceability: NIST  
 Product Range: 50 nm to 3 μm\*

\*Other sizes and sphere counts available upon request

		Wafer Diameter	
		200 mm	300 mm
		5,000	5,000
		Number of Spheres per Spot	
	Particle Diameters (nm)	Spots	
Small	50, 60, 72, 83	4	LCS8-4S-50-83      LCS12-4S-50-83
	60, 83, 102, 126, 155	5	LCS8-5S-60-155      LCS12-5S-60-155
	50, 55, 60, 64, 72, 81	6	LCS8-6S-50-81      LCS12-6S-50-81
Large	204, 304, 494, 1112	4	LCS8-4S-204-1112      LCS12-4S-204-1112
	204, 304, 494, 1112, 3040	5	LCS8-5S-204-3040      LCS12-5S-204-3040
	155, 204, 304, 494, 1112, 3040	6	LCS8-6S-155-3040      LCS12-6S-155-3040